

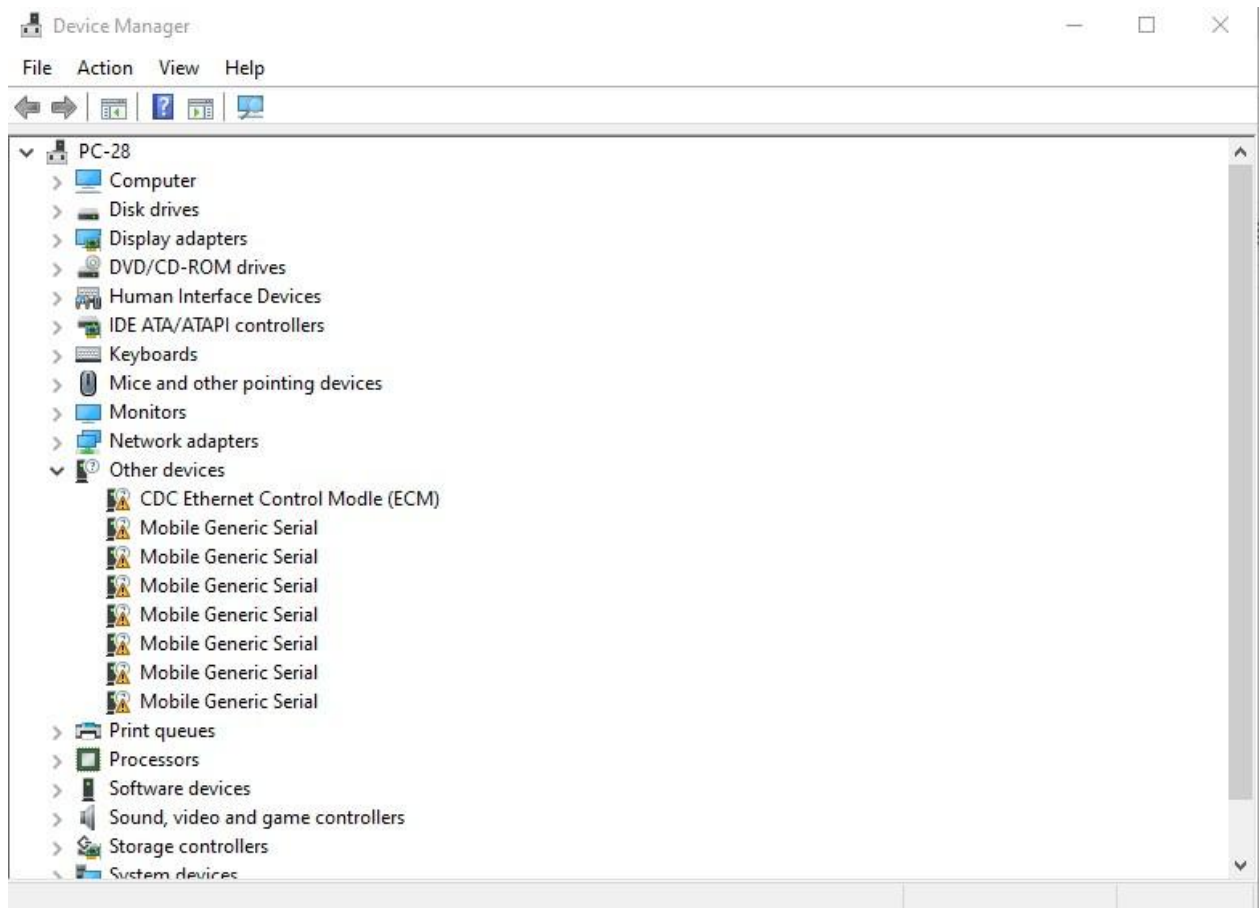
7Semi EC200U-CN USB Modem Driver installation Guide

Instructions to install the EC200U-CN USB Modem Driver

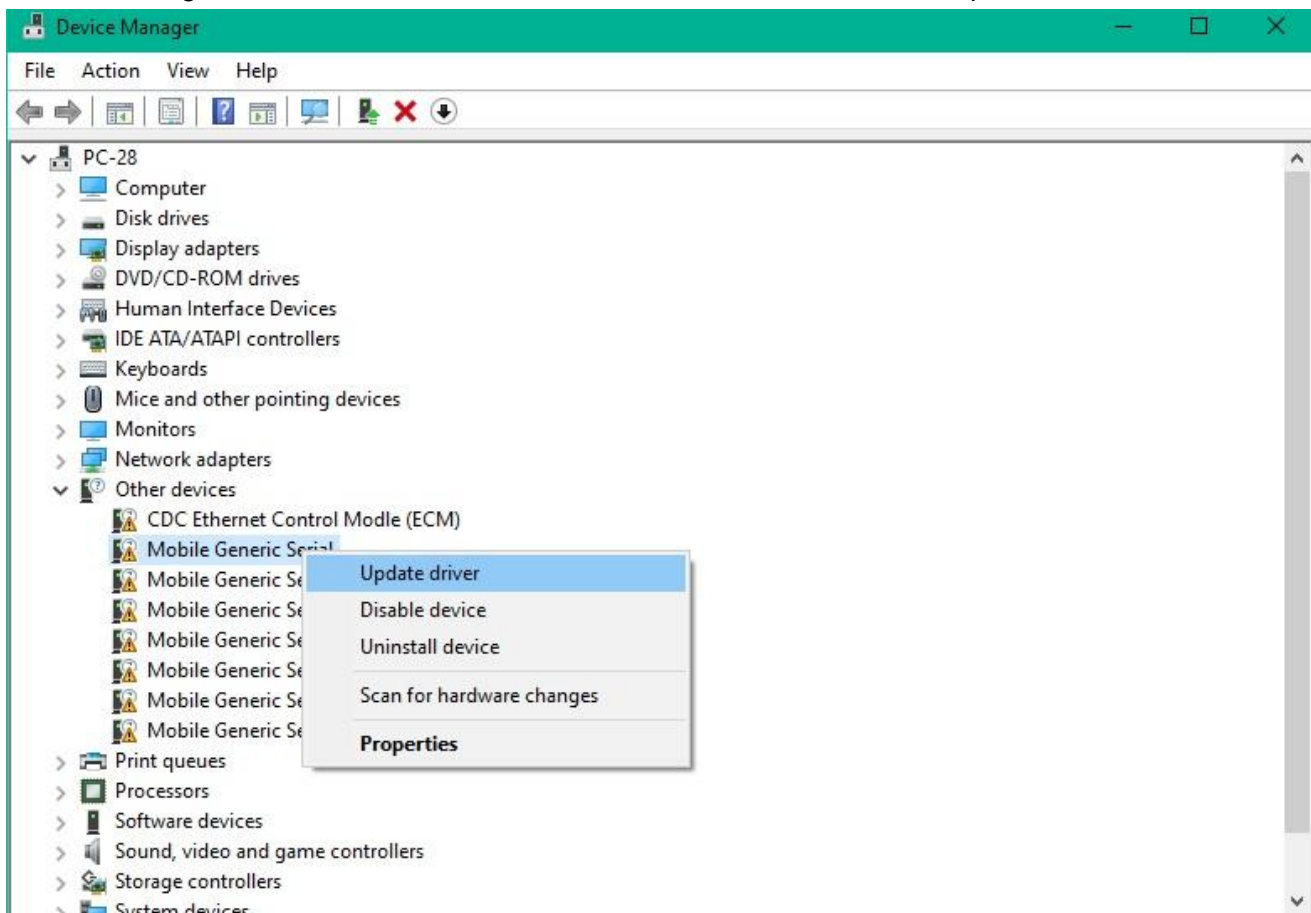
1. Download the EC200U-CN LTE 4G GNSS USB Modem Driver and extract it.
 - [Download the EC200U-CN USB Modem Driver](#)
2. Connect the modem to the USB port of your laptop/PC



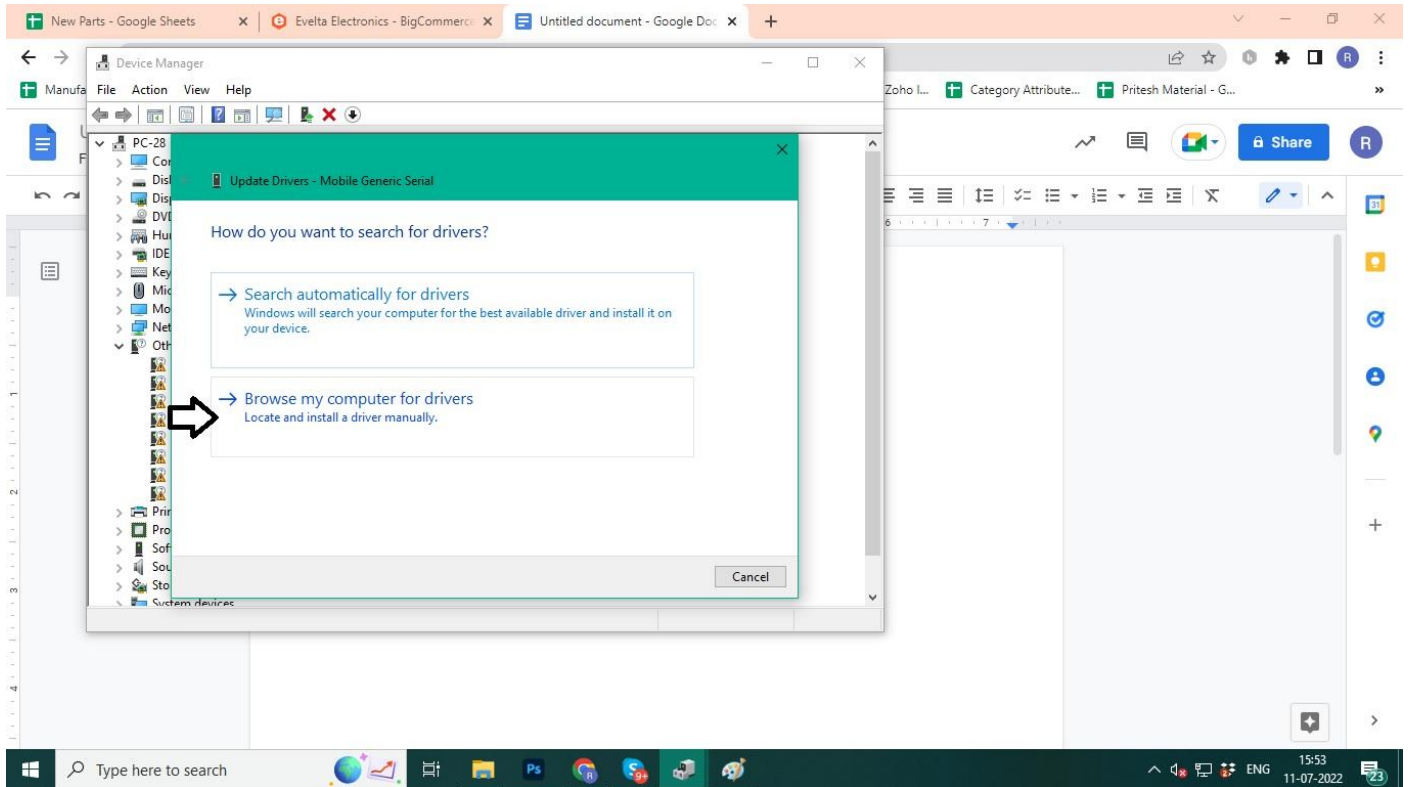
- Now go to the Device Manager, the modem is detected now. You will see the device manager as shown in the image below.



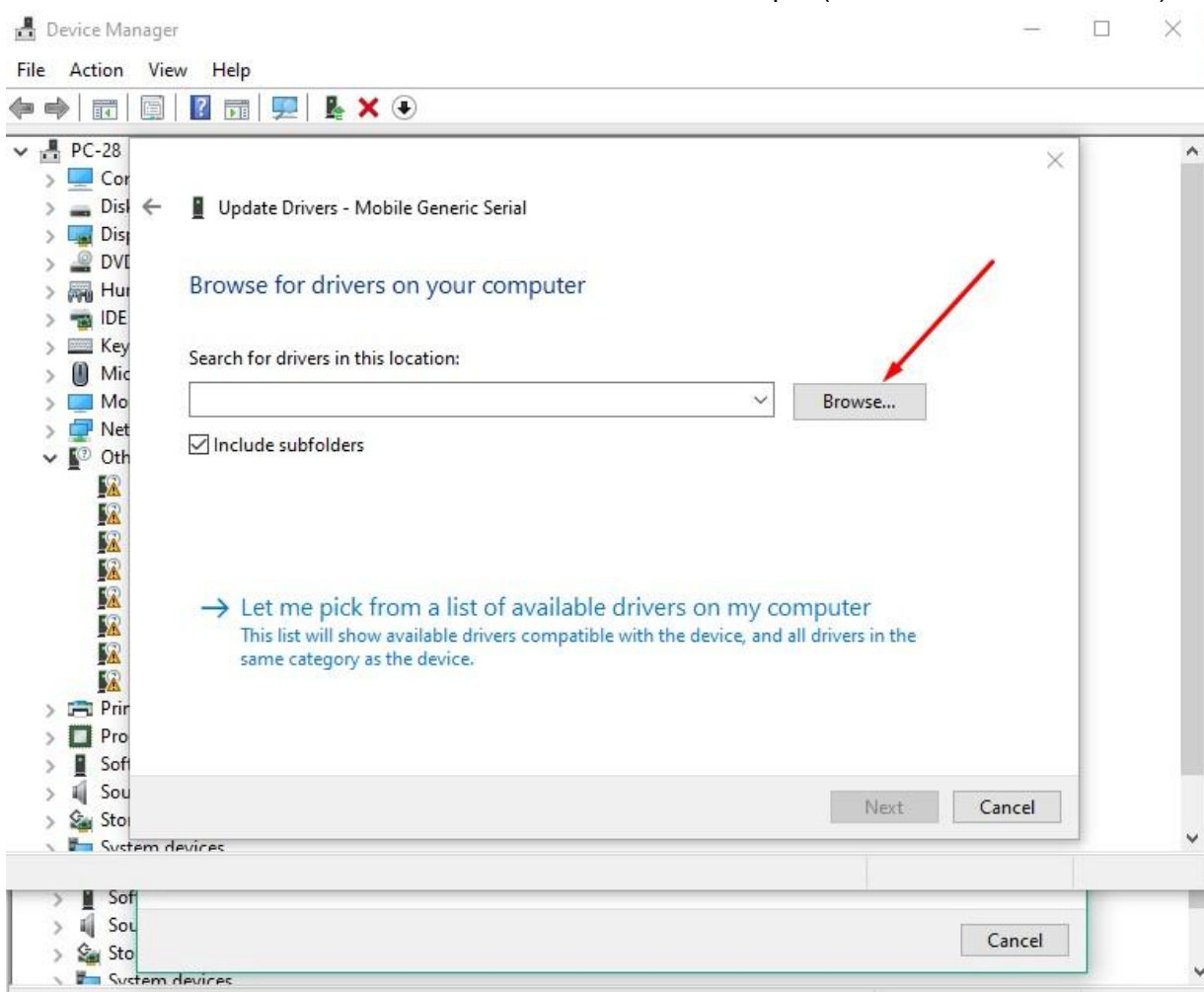
- Now right click on the one of the "Mobile Generic Serial" and click update driver.



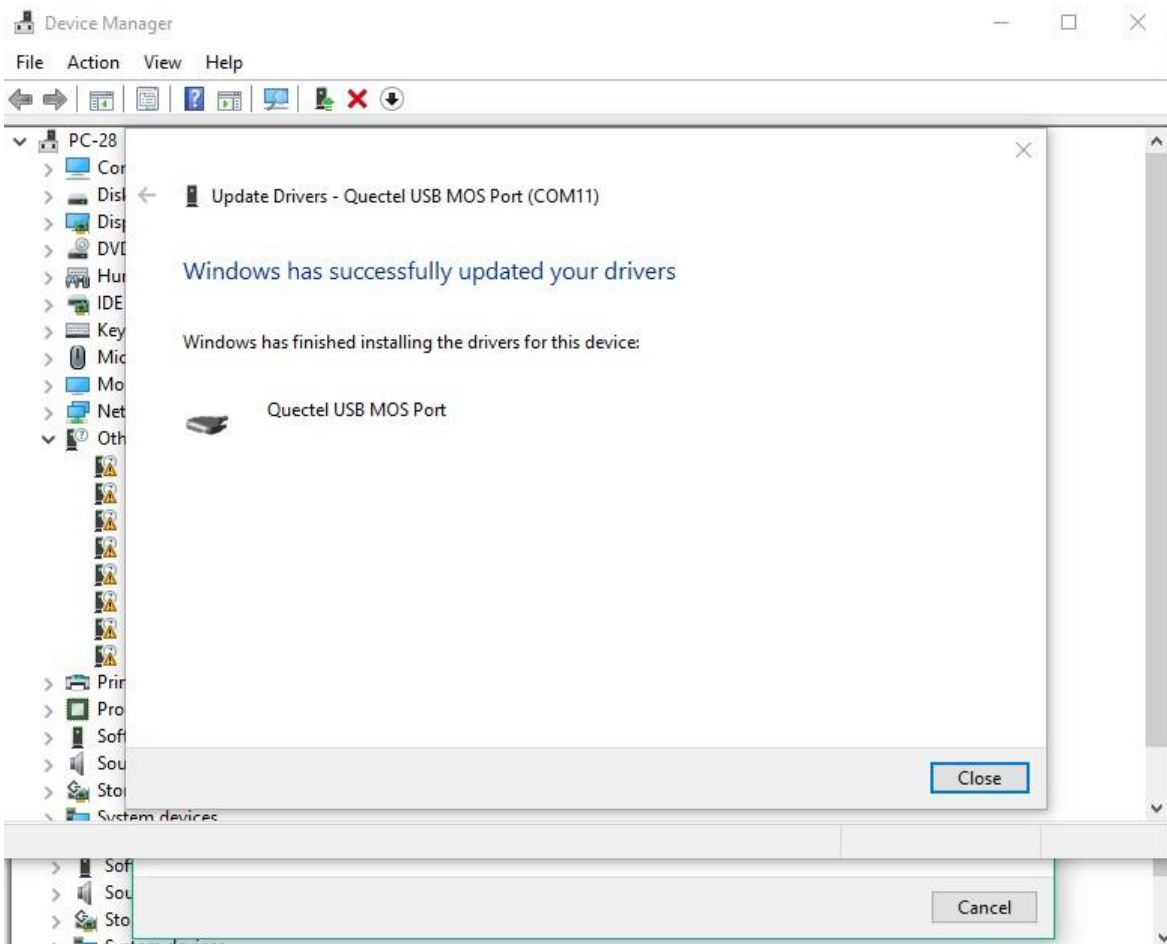
5. Click on the Browse my computer for drivers.



6. Now locate the extracted folder downloaded from step 1 (the download USB driver) and click next.



7. Now Quectel USB MOS Port driver installed successfully.



8. Now install all the drivers one by one following the above steps.

9. The Device Manager will look like this after all the drivers are installed.

